



Description:

Hydraulic transport equipment of type NZH2/4, further as transport equipment, is equipment used for transport and manipulation with burdens on single-track of profile I155 in horizontal level and in a slope to 25°.

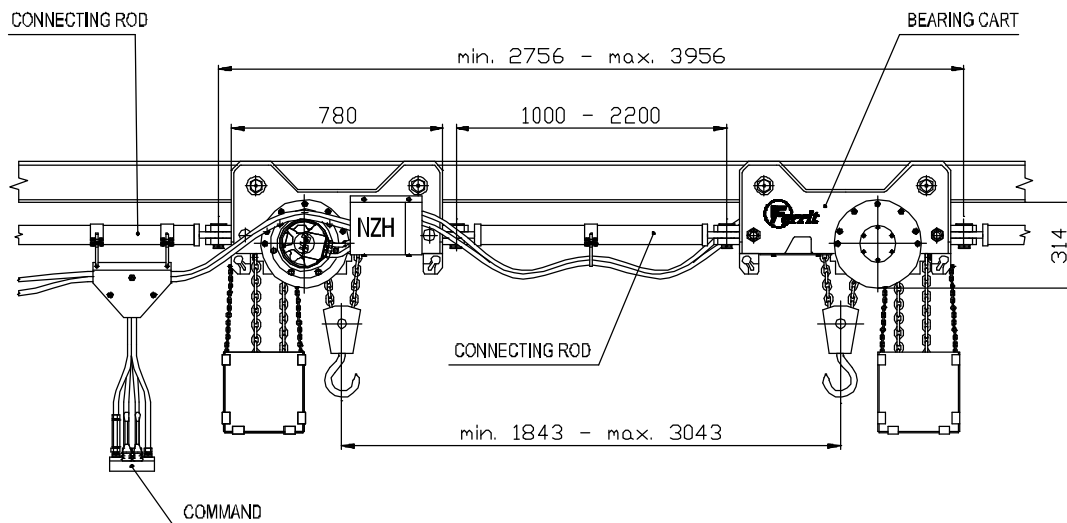
As traction instrument as long as source of pressure oil is recommended to use the pendent locomotive or authorized type of manipulator.

NZH2/4 can be used in places with explosion hazard of methane or dust coal to the degree SNM 2 according to 232 public notice ČBÚ No. 22/1989 digest as amended by later regulations. According to regulation of government No. 23/2003 (directive EU 94/9 ATEX) the equipment falls under the group I and category M2.

Hydraulic transport equipment NZH2/4 is made by one cart (frame) with lifting equipment, operating and lever or hook. Lifting part consists of one (bearing value 1900kg) or two (bearing value 3800 kg) slow-running engines with stationary brake. On flange of hydraulic motor there is bolted a sprocket-wheel by which means the lifting chain is actuated. This configuration is fixed between the side plates of beran of cart. In facture with one hydraulic motor the sprocket-wheel is gripped on flange of hydraulic motor and of auxiliary console. The lifting chain is anchored on the frame so that the sprocket-wheel of hook or lever makes idle pulley. Unloaded end of chain is laid away to the spare bag.

Technical parameters:

Maximum bearing value of NZH2/4 P1 (P2)	3800 (7600 kg)
Maximum bearing value (one cart)	1900 (3800 kg)
Working store	according to length of chain (cca 8 m)
Drive, hydraulic maximum pressure	16 + 10 % MPa
Time of upstroke 1 m NZH2/4 P1 (P2)	11,6 (23) sec at 10 l.min ⁻¹
Working liquid	hydraulic oil
Maximum cant	25°
Weight NZH2/4 P1 (P2)	618 (662) kg
Maximum drawing force of tractive instrument	110 kN
Maximum trucking speed	2 m/s
Maximum carried weighting on track over one cart	4000kg

Dimensional drawing:

Ordering:

In the order please state the type of the machinery you ask for, supply number, number of units, number of asked sets accompanying documentation (Direction for use, Catalogue ND, etc. – usually we enclose 2 sets of this documentation) and specific requirements (for example different paint, etc.)



HYDRAULIC TRANSPORT EQUIPMENT NZH2/4

KL-NZH2/4-EN

Version	Valid from
2	20.4.2009

Page 3/3

Ordering key:

SUPPLY NUMBER	VERSION
701-00-00000-9-04	NZH2/4 P1
702-00-00000-9-04	NZH2/4 P2
704-00-00000-9-04	Set 2xNZH2/4 P1 (QUATTRO)
705-00-00000-9-04	Set 2xNZH2/4 P2 (QUATTRO)
706-00-00000-9-04	Set 3xNZH2/4 P1 (SESTO)
707-00-00000-9-04	Set 3xNZH2/4 P2 (SESTO)

Example of ordering:

An order of one hydraulic transport equipment NZH2/4 P1 with a delivery 3 sets of accompanying document

MACHINE TYPE	SUPPLY NUMBER	ITEMS NUMBER	ACCOMPANYING DOCUMENTATION	SPECIFIC REQUIREMENTS
NZH2/4 P1	701-00-00000-9-04	2	3 Sets	

Delivery date: 12 weeks from confirmation the definite order

Customs classification: 8425 42 00 90



FERRIT s.r.o, Na Zbytkách 41 , Staré Město u Frýdku-Místku,
739 01 pošta Baška, Czech Republic
Tel. +420 / 558 411 605, fax +420 / 558 411 620
E-mail: ferrit@ferrit.cz, www.ferrit.cz